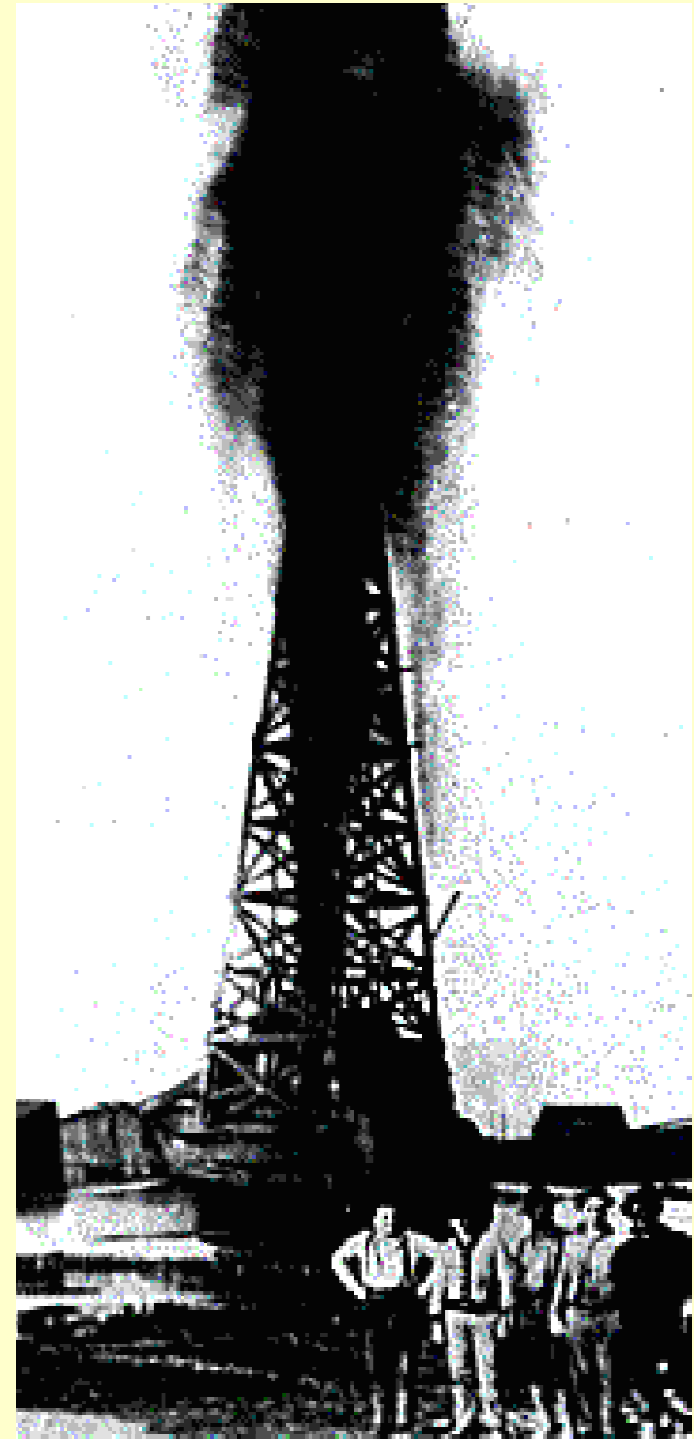


# HYSTORY

- 1904 –Romanian American Company ,a subsidiary of Standard Oil Company start activities and build workshops and refineries facilities near Ploiesti
- 1950-Mechanical workshops of Romanian American Company became UZTEL Company of the Oil Romanian Ministry
- 1991-UZTEL became a joint stock company





# MAIN FACILITIES

- Engineering
- Foundries
- Forge
- Heat treatment workshop
- Machine workshops
- Metallic construction workshop
- Laboratory mechanical, chemical, metrological
- Test facilities for valves ,wellhead ,pumps ,gear boxes ,drilling rigs
- Repairs workshop
- Coating and painting workshop



# CUSTOMERS

**ABB FRANCE**

**ARRAY PRODUCTS CO. USA**

**BARBER INDUSTRIES** Canada

**CALTEX PACIFIC** Indonesia

**GIF ASCOM** Moldavia

**KVAERNER OILFIELD PRODUCTS USA**

**NATIONAL RESURCES AUTHORITY**  
Jordan

**NEWMAN'S INC. USA**

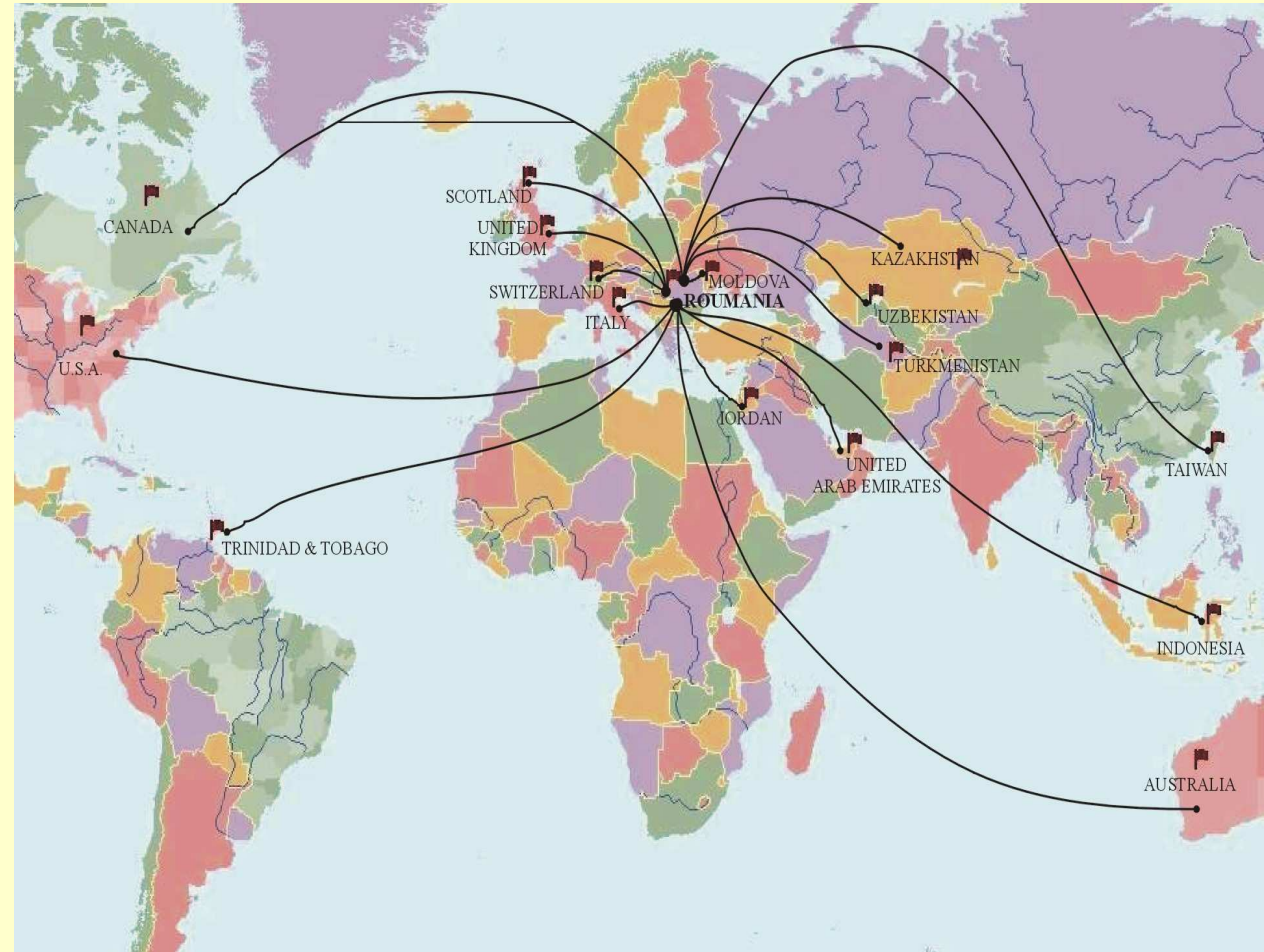
**PETROM OMV** Romania

**PETROTEL LUKOIL** Romania

**PERTAMINA** Indonesia

**PESECO UK**

**PLEXUS OCEAN SYSTEM UK**



# CERTIFICATES

- ISO 9001 -2000

- ISO 14001

- BSOHSAS 18001

- CE



- AMERICAN PETROLEUM INSTITUTE

- API 6A VALVES AND WELLHEAD  
PSL1-4

- API 6D PIPELINE VALVES

- API 10 D BOW-SPRING CENTRALIZER

- API 11 IW INDEPENDENT WELLHEAD



# OILFIELD EQUIPMENTS

Manufacture &  
Repairs for

Drilling rigs

Mud pumps

Shakers

De-sanders & de-  
silters

Cranes

Derrick & mast

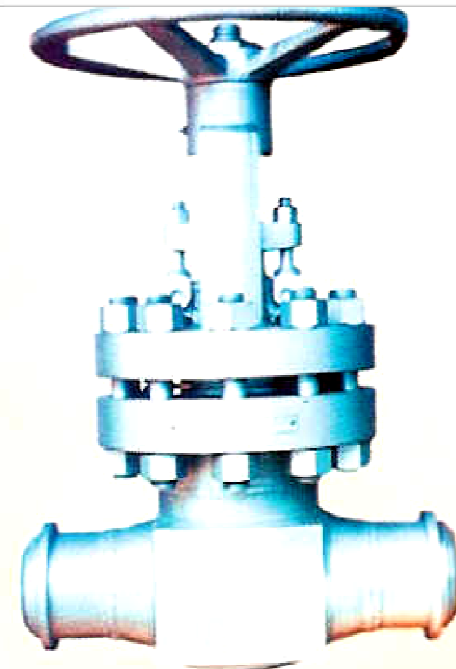
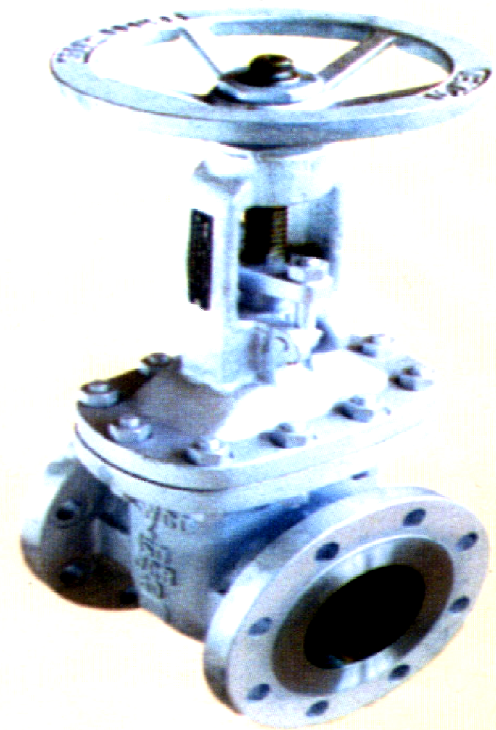
Tanks &  
Manifolds







# VALVES





# API 6D VALVE

- Size 2" .....28", Pressure Class 150, 300, 400, 600
- Size 2" .....24", Pressure Class 900, 1500
- Size 2" .....12", Pressure Class 2500
- Forged , cast and fabricated weld version
- Full bore, through conduit
- Expanding gate
- Slab gate
- Ball valves  
Plug valves
- Check valves



# API 6A VALVES

SIZE 1 13/16",  
2 1/16" .....7 1/16"  
PRESSURE  
2000 ....15000 PSI  
TEMPERATURE  
-60 + 550 C  
FORGED & CAST  
VERSIONS  
CARBON AND  
STAINLESS STEEL  
MATERIALS AA...FF





# CHOKES

SIZE 1 13/16",

2 1/16" .....7 1/16"

PRESSURE

2000 ....15000 PSI

TEMPERATURE

-60 + 121 C

FORGED & CAST  
VERSIONS

CARBON AND  
STAINLESS STEEL  
MATERIALS

AA...FF



# WELLHEAD & X-MAS TREE

SIZE 7 1/16" ... 21 1/4"

PRESSURE 2000  
... 15000 PSI

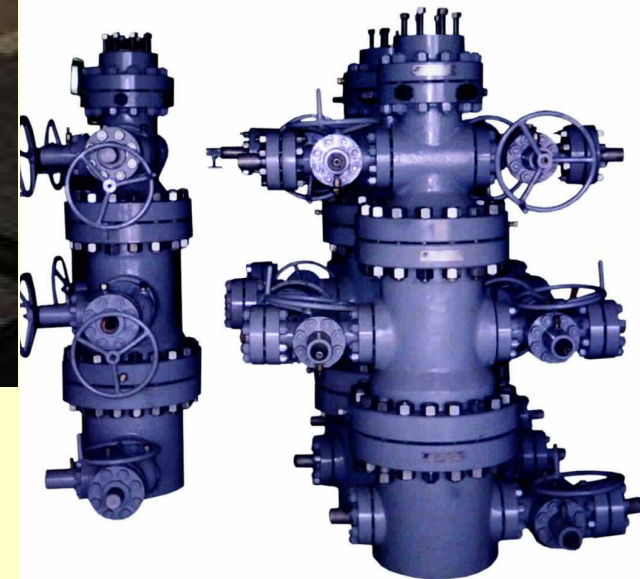
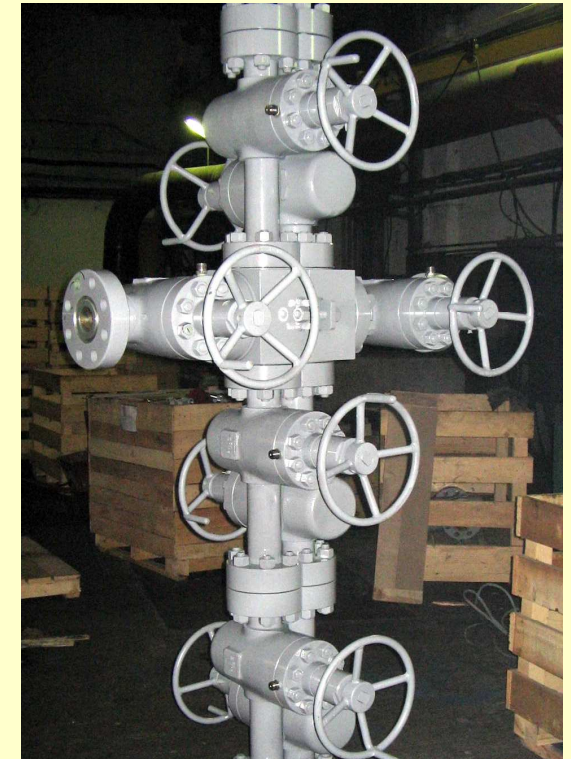
TEMPERATURE –  
60 + 121 C

HIGH  
TEMPERATURE  
ON REQUEST

FORGED & CAST  
VERSIONS

CARBON AND  
STAINLESS STEEL  
MATERIALS

AA...FF





# CHOKE AND KILL MANIFOLDS



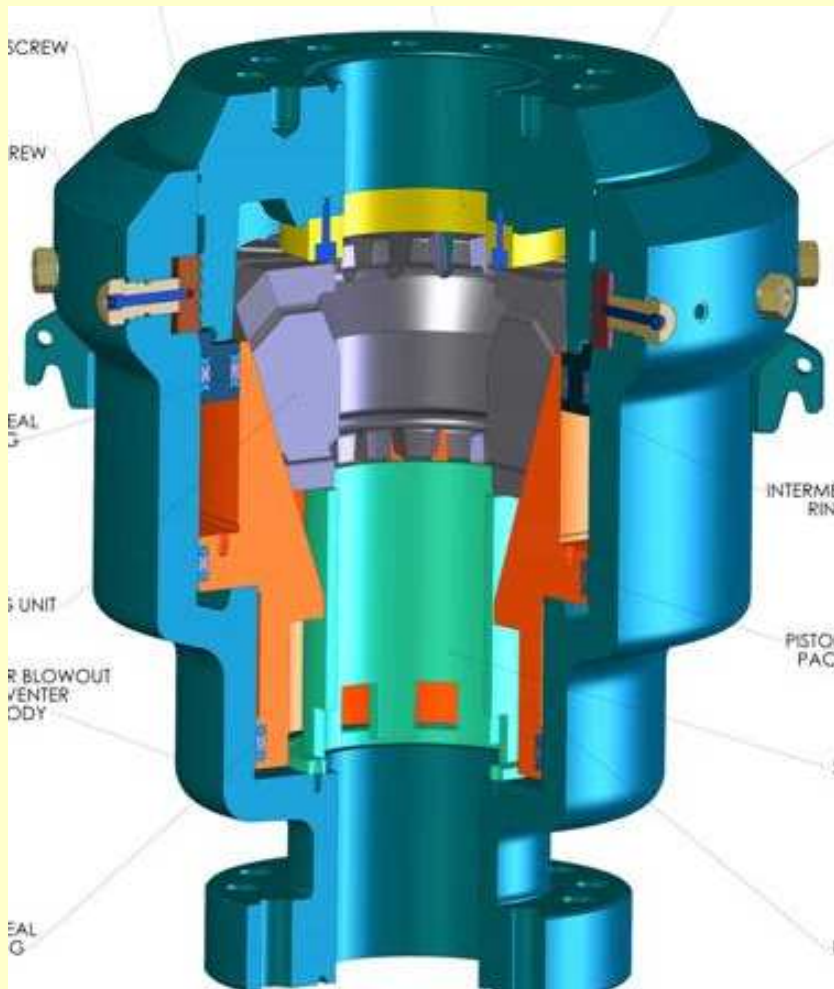
# BOP



DUAL RAM BOP 7 1/16" - 13 5/8" 2000...10 000 psi

# ANNULAR BOP

7 1/16" - 13 5/8"  
2000...10 000 psi



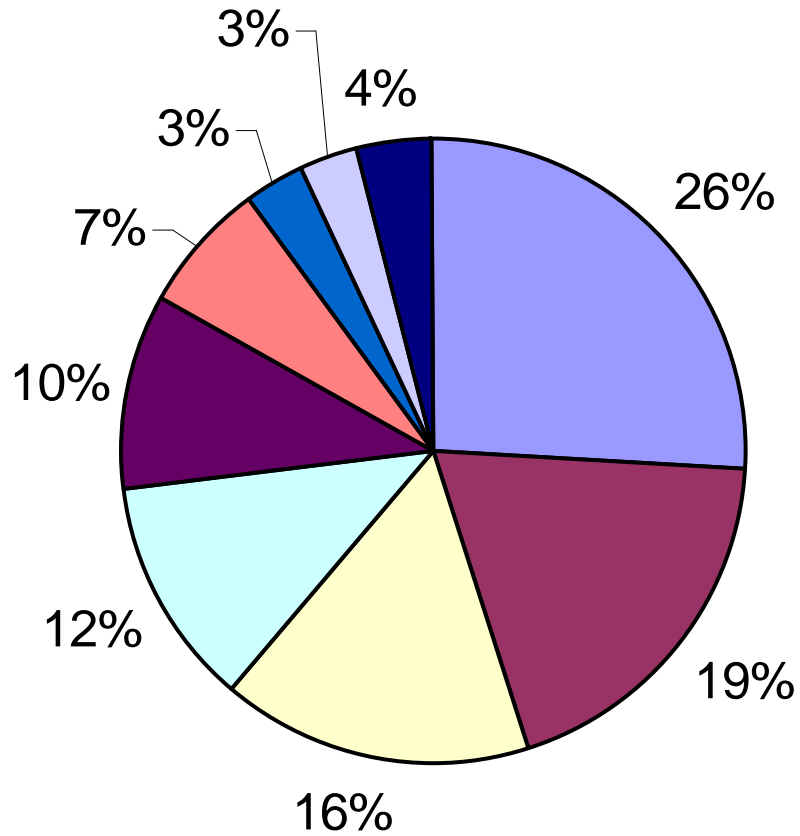
# WORKOVER BOP



# CONTROL UNIT



# PRODUCTS



- VALVES
- WELLHEAD
- EQUIPMENTS
- SPARE PARTS
- CAST PARTS
- REPAIRS
- FORGED PARTS
- CENTRALIZERS
- OTHER